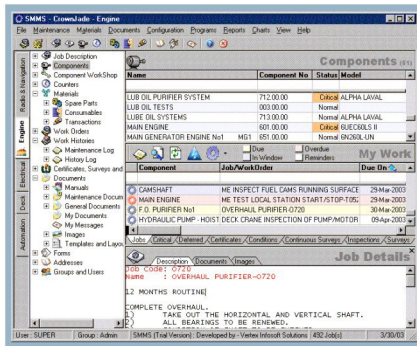


SMMMS

For Those Who Believe in Planning

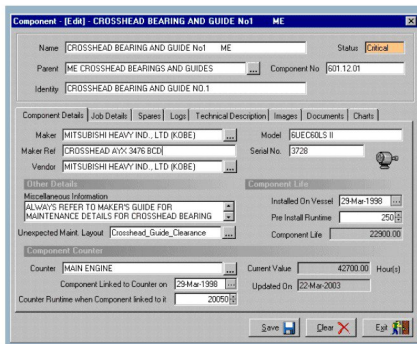
STANDARD SUITE





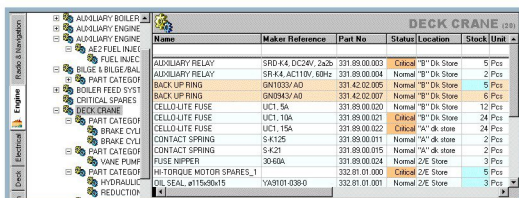
Ship Maintenance and Management System

Ship Maintenance and Management System is a Windows based Multi User Software. It has been developed to work on true Client-Server based technology, which runs equally well for both stand alone and Network computer installations.

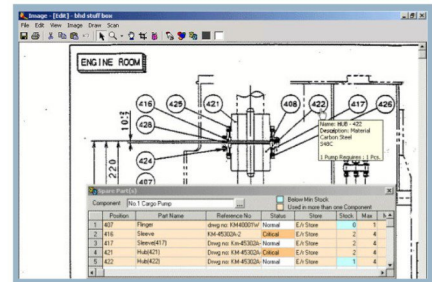


The Software package provides following features

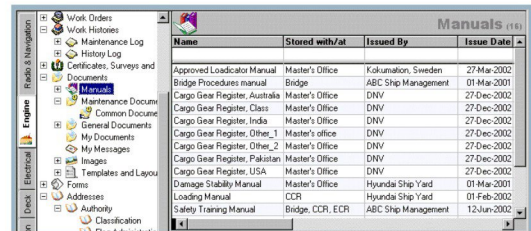
Complete Shipboard Planned Maintenance. This includes planning and preparing Job Descriptions and Complete maintenance schedules for various Components as per Makers requirements, assigning various jobs to Groups and then automatically scheduling and reminding jobs for all Components. Jobs scheduling can be based on either Runtime counters or Calendar counters. Facility of reporting unexpected maintenance, CBM jobs, Work Orders and Deferred jobs is also provided. Detailed log maintained for various jobs done for a Component including records of Component circulation from active use to store / workshop and back. Component and/or jobs can be highlighted as "Critical". Unlimited graphical Images and Documents can be attached.



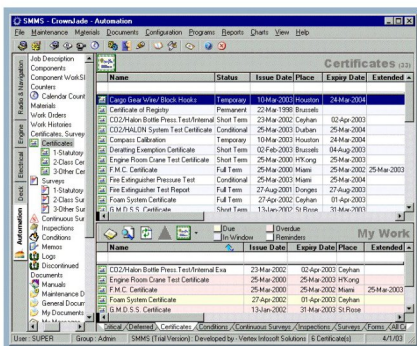
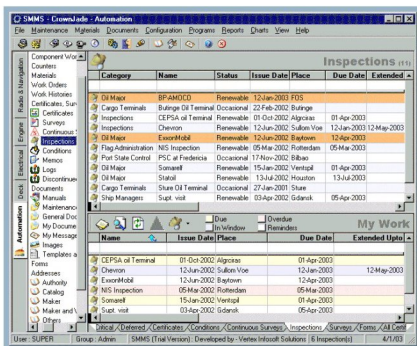
Extensive Spare Parts and Consumable Inventory Management. Complete Spare Part details including Maker details, drawings, documents, location in the store, maximum and minimum requirements, price, vendors, delivery time etc. are included with each Spare Part. Spare Parts are linked with the required component. Facility is provided to link Spare Parts common to many Components. Inventory stocks are automatically updated and displayed when reporting work done for a job or when adding Purchase transactions for Spare Parts received through requisitions. Automatic notification for Spare Parts falling below defined minimum quantity. "Critical" Spare Parts are highlighted.



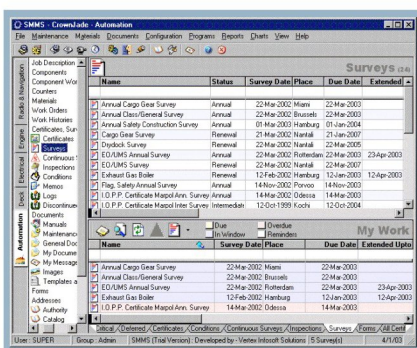
Powerful inbuilt Image Designer and Text Editor along with Hot Spot facilities. Facility for attaching digital Images, Image editing for Captions, drawing diagrams etc. is provided. Drawings or photographs of technical equipment provided by manufacturers can be inserted and displayed as explosion drawings or photographs. Hotspots can be used on various equipment drawings and linked to any Component, Spare Part etc. This visual recognition provides very easy and simple way to identify and requisition spares.



Complete e-Documentation module. Various Manuals, SMMS documents and any other documents can be stored in Word, Excel, PDF or SMMS format. A powerful text editor is inbuilt in the Software. Record of Document details can be stored and displayed.



Certificates and Inspections modules. This powerful feature assists in keeping record of issue and expiry details, port of issue, extensions, if any, and any description for all Certificates and Inspections. Also for Inspections various deficiencies and their current status is available. Automatic Notification is given for forthcoming Certificates and Inspections.



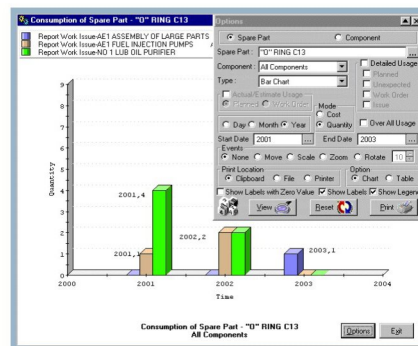
Statutory Surveys and CSM Surveys module An advanced functionality to record issue and expiry details, port of issue, extensions, if any, past renewal details and Survey description. Various deficiencies given as "Condition of Class" or "Memos" and their Current status maintained. Automatic Notification is given for forthcoming due Surveys.

Management Information System

Extensive Charts and highly Configurable Reports for MIS and Budget Management are available. Various options are available to extract reports in list or detail format with user defined selection of fields. Reports and Charts can be used for drawing future budgets and verifying effectiveness of Planned Maintenance System on board ship.

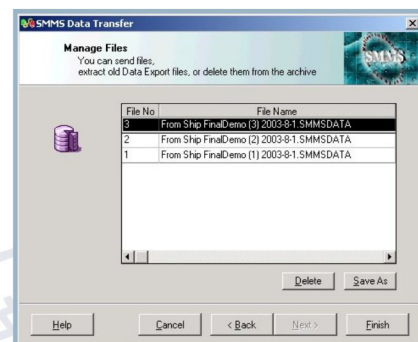
Work Done List
Wednesday, April 02, 2003 11:57:35AM
Report for last 10 jobs(s)

Main Component		Due Date	Done Date	Done Hours	Log Type	Group
AUXILIARY ENGINE No.2 AE2						
CRANKSHAFT AE2						
FLYWHEEL TURNING SERVICE AE2						
1)	AE CHECK FLYWHEEL COUPLING BOLTS TIGHT-C234	14-Mar-2002	18,296.00	Planned	Chief Eng.	
2)	AE CHECK FLYWHEEL COUPLING BOLTS TIGHT-C234	24-Mar-2001	14,530.00	Planned	Chief Eng.	
3)	AE CHECK FLYWHEEL COUPLING BOLTS TIGHT-C234	09-Jun-2000	12,221.00	Planned	Other Eng.	
4)	AE CHECK FLYWHEEL COUPLING BOLTS TIGHT-C234	11-May-1999	7,863.00	Planned	Admin	



Instant Messaging System

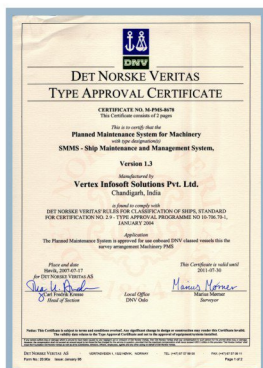
Inbuilt Instant Messaging system is available both online and offline with Automatic notification for unread messages.



Data Transfer and Updation

Advance Data Replication (between Ship and Office) with online Compression and Encryption allows maximum

Data to be transmitted with minimum communication costs. Easy and secure facility of data Backup/Restore/Export and Import allows complete safety of Data against loss, deletion or duplication.



Class Approval

SMMS Software complies with ISM code and has been awarded **DNV Certification for Product Type Approval**.

Other features

- Address Book to store all kind of Details and Contact Information
- Data Security and Integrity.
- Very high User and Group Securities and Permissions.

Add on Module: A separate module for Requisition and Fleet Purchase Management System can be purchased and made integral with the SMMS Software. This module assists in drafting Requisitions for Spare Parts below minimum stock level, user defined Spare Parts, Services, Consumables etc. The Requisition system can also be integrated with already existing Fleet Purchase Management System installed in the office.

Support and Services

- ⇒ A Dedicated team of our in-house Technical Support Engineers is available to handle all the queries related to SMMS Software.
- ⇒ We have expertise in creation of Planned Maintenance and Inventory Databases for the Vessels and other offshore installations. We also provide the services for migration of Data from existing Planned Maintenance Software to SMMS Software.
- ⇒ Our Technical Engineers are available to provide the on-site services for installations of Hardware, Networking and Software on the Vessels and Shore offices.

Training

- ⇒ Interactive Computer Based Training (CBT) Software is available as Self Training Guide for all functions of SMMS Software. A set of comprehensive Training and Operation Manuals are also available for quick and detailed learning of all the Software features.
- ⇒ In-house and on-site Trainings for installation and operation of SMMS Software are available for office and sailing staff. The trainings can be specifically arranged as per the client requirement.

Recommended Hardware Requirements

- Processor: 500 MHZ or above.
- RAM: 128 MB or above.
- Free Disk Space: 1 GB or above.
- Network Card: any make.

Software Requirements

SMMS is a Window based Software and can run on following platforms :

- Windows 2000
- Windows 2000 Server
- Windows XP
- Windows 2003 Server
- Windows Vista
- Windows 2008 Server
- Windows 7

Contact Us

For Sales inquiries / Support and Services please contact :

Vertex Infosoft Solutions Pvt. Ltd.

Plot No. 434, Industrial Area, Phase 9, Mohali,
Punjab (India), Pin Code: 160062
Tel: +91 172 5053709
Fax: +91 172 5063396
Email: corporate@vertexinfosoft.com
Web : www.vertexinfosoft.com
www.smms.vertexinfosoft.com



Vertex Infosoft Solutions Pvt. Ltd.



Type Approved by DNV

Type approval certificate No.: M-PMS-8678